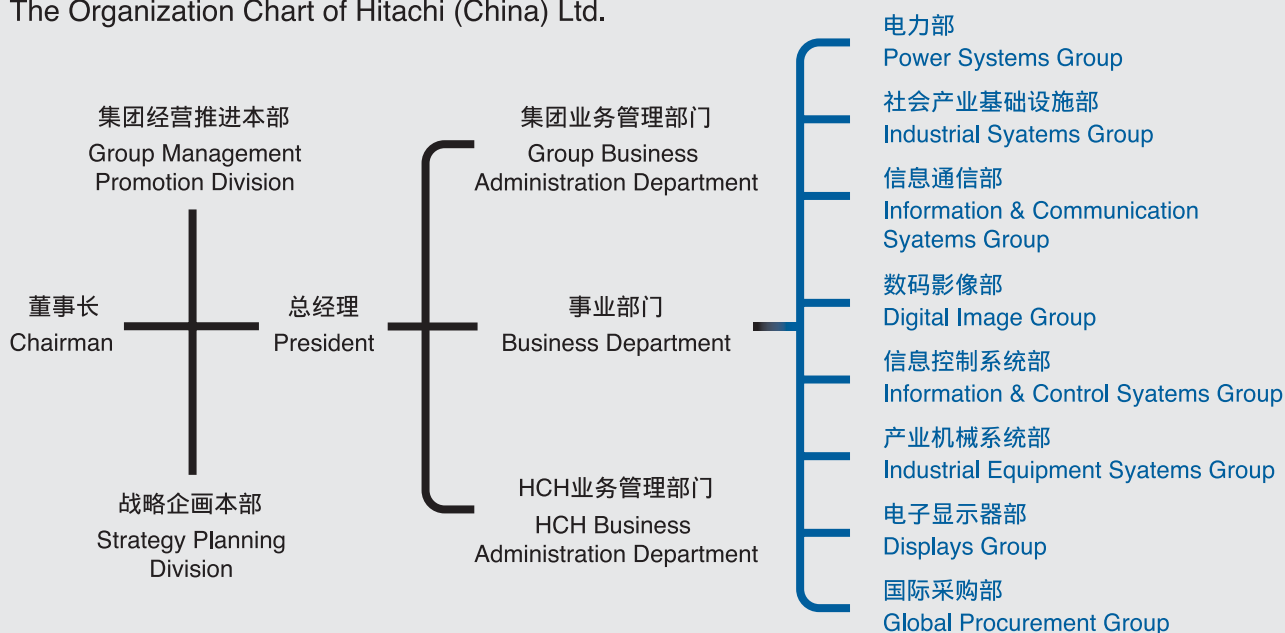


日立(中国)有限公司组织结构图 The Organization Chart of Hitachi (China) Ltd.



公司职能

日立(中国)有限公司的地区总部职能包括引领在华的140多家日立集团公司,从电力及工业设备系统、IT系统到高性能材料等广泛的事业领域开展各项事业;为了满足客户的需要,尽全力提供可信赖的、安心的服务;同时,包括根据需要对各集团公司进行投资、强化研发、推进企业社会公益活动(CSR)等。

另外,日立(中国)有限公司牵头制定了人才培养战略,积极地吸收和任用优秀的本地人才,并逐步安排他们走上经营骨干岗位。

日立(中国)有限公司有如连接日立在华的纽带,通过增进各公司间的交流与合作,充分调动日立集团的联合效应,推进日立在华事业的发展。

Corporate Functions

As regional headquarters, Hitachi (China) Ltd. is, in the first place, responsible for leading over 140 Hitachi group companies in China to operate businesses in a wide range of sectors from power & industrial systems and IT systems to high functional materials. Hitachi is also dedicated to offering reliable, trusted services to satisfy customers' demand. Besides this, it may make timely investments as necessary in various group companies in China, and help them strengthen R&D capacities and promote CSR activities.

Furthermore, Hitachi (China) Ltd. takes complete control of the group' s HR development strategy in China by recruiting local talent and assigning them to appropriate managerial positions.

Functioning as a single link among all group companies in China, Hitachi (China) Ltd. is committed to promoting Hitachi' s business operations in China by facilitating communication & cooperation among all group companies to leverage synergy effects across the group.